

P195 PATH PAVER



BUILT FOR PRODUCTION.

Engineered and built with versatility in mind, the Weiler P195 incorporates proven designs with new innovations to provide performance, reliability and outstanding mat quality in a wide range of applications.



VERSATILE SCREED.

The Weiler designed screed delivers outstanding mat quality and a wide paving range. The 3' 10" (1.16 m) front mount screed is hydraulically extendable to 7' (2.13 m) and 9' (2.74 m) with bolt-on extensions.



SMOOTH RIDE.

80" (2032 mm) track length with 64" (1625 mm) of ground contact and 125 mm track chain pitch provides smooth ride and excellent flotation. Automatic track tensioning ensures performance and maximizes component life.



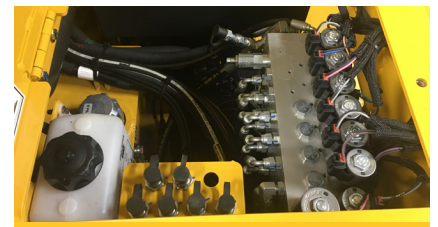
VISIBILITY AND CONTROL.

All controls are located on a single panel within easy reach of the operator. The sliding control console enhances operator ease of use and visibility to either side of the machine.



NARROW DESIGN.

The 46" (1.16 m) track width and 3' 10" (1.16 m) screed allows the P195 to fit within a 4' (1.2 m) cut for a true 4' (1.2 m) paving width. The hopper folds up for an overall machine width of 4' 7" (1397 mm) for simple transport and access to tight working environments.



FAST SERVICE.

Remote grease lines, spray down system with 5 gal (19 L) tank and coiled hoses, three engine access doors and Caterpillar dealer service and support keep your machine up and running with limited down time.

P195 SPECIFICATIONS

WEIGHT	13,000 lb	5896 kg	SCREED WEIGHT	1,800 lb	816 kg	ENGINE	Cat® C2.2 Tier 4F	
LENGTH	15'	4572 mm	MAIN PLATE WIDTH	16.5"	419 mm	PAVING SPEED	233 fpm	71 mpm
WIDTH	55"	1397 mm	EXTENSION PLATE WIDTH	9"	228 mm	TRANSPORT SPEED	350 fpm	106 mpm
HEIGHT	69"	1752 mm	SCREED HEAT	Electric - 4 elements		FUEL CAPACITY	25 gal	94 L
TRUCK CLEARANCE	20"	508 mm	VIBRATION	1 x 2500 vpm		HYDRAULIC CAPACITY	30 gal	113 L
AUGER DIAMETER	12"	305 mm	MAX AUGER SPEED	90 rpm		SPRAY DOWN CAPACITY	5 gal	18 L

POWERTRAIN

Cat® C2.2 Tier 4F engine with 67 hp (50 kW)
3-Speed hydrostatic drive, 350 fpm (106 mpm) transport speed
Automatic track tensioning
80" (2032 mm) track length with 64" (1625 mm) of ground contact
8" (203 mm) performance, poly track pads
6 track rollers per side
125 mm track chain pitch
Hydraulically driven 12 kW generator

OPERATING ENVIRONMENT

Sliding, single control panel
Push button keypads
LCD display provides conditions and diagnostics
Pause mode enables return to same settings
Steering knob control
Walkway extensions

MATERIAL DELIVERY

7-ton (6.3 mt) hopper
Replaceable floor plates
Single conveyor
Narrow chain guards
12" (305 mm) Ni-hard augers
Variable speed and reversible augers and conveyors
Adjustable, oscillating and folding push roller
Independent auger and conveyor control
Independent hopper control

SALES AND SERVICE

Sold and serviced exclusively through Caterpillar dealers worldwide.

WWW.WEILERPRODUCTS.COM

SCREED

3' 10" (1.6 m) to 7' (2.1 m) standard paving width
9' (2.7 m) paving width with bolt-on extensions
4 element electric heated screed w/ thermostatic control
3/8" (9.5 mm) thick screed plates
Heated end gates standard
Grade and slope controls
Sonic feed sensors
Manual crown adjustment (+-3%)
Folding rear walkway

SERVICE/MAINTENANCE

5 gal (19 L) spray down system with 2 hoses/nozzles
Braided electrical harnesses and sealed connections
12-volt electric system with automotive-type fuses
Remote hydraulic diagnostic ports
Remote grease fittings
3 engine access doors
Lockable vandal covers and engine access doors

OPTIONAL EQUIPMENT

LED strobe light
Hand held remote
Auto grade and slope controls
LED work lights

WARRANTY

12 months standard. Extended warranty available.